



ARIANES

# QUALITY OF CARE FOR THE PATIENT

For an optimized use of imaging in the early detection of diseases and the improvement of diagnoses



Screening • Expertise • Research • Care • Innovation

## Arianes, in a few words...

The project led by the Arianes association aims to improve diagnoses and care for patients suffering from neurological, psychiatric, cardiac and cancerous pathologies. It uses the latest scientific advances which, thanks to artificial intelligence, allow the quality of MRI scans to be optimized, thus enabling the early detection of many diseases.

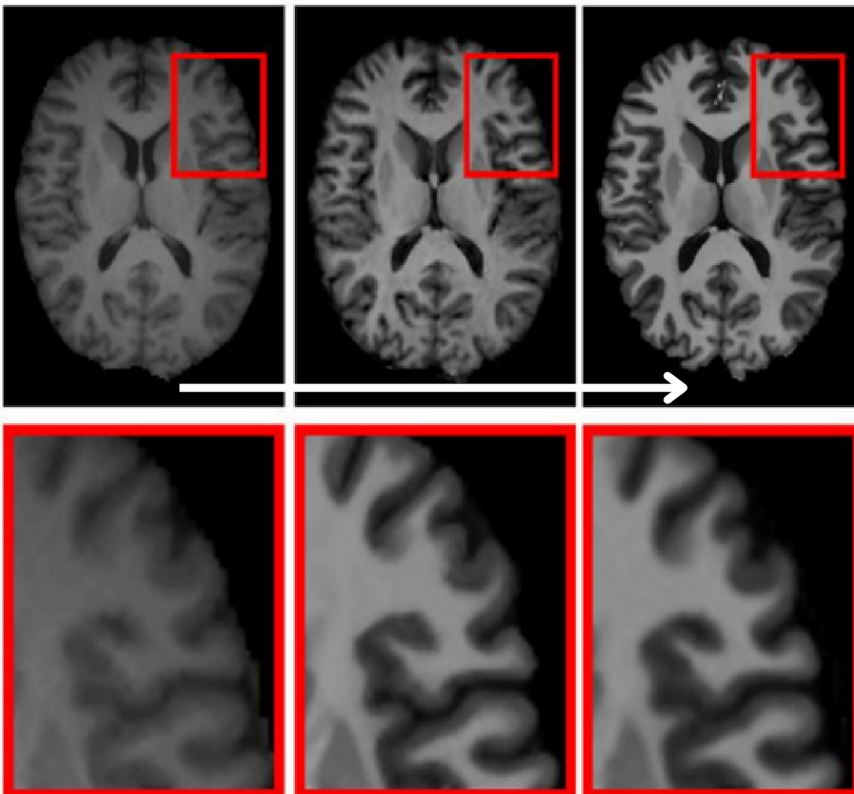
The network of imaging centers in the Hauts-de-France region facilitates the continuity of care between the city and the hospital and helps to relieve congestion in emergency services. The network allows practitioners to benefit from the support of experts in the event of a complex diagnosis.

Finally, networking promotes the transfer of imaging innovations to patients. Arianes accelerates the identification of new biomarkers through the creation of research cohorts unprecedented in the region.

3T MRI

7T MRI

7T SYNTH



The image illustrates how the uses of artificial intelligence in imaging can improve the definition of MRIs and detect many pathologies early.

## Features

- Networking of imaging centers
- City-hospital linkage
- Remote expertise
- Early diagnosis
- Training
- Dissemination of innovation

# Facing a “public health tsunami”

Health problems related to cognitive decline and advancing age

Increase in mental health problems

Poor health indicators of the regional population

## Advances made by the Arianes project

- Offer equal access to care and reduce the loss of opportunity
- Increase the quality of examinations through remote expertise
- Enable each examination to be relevant and informative
- Shorten delays and promote early diagnosis

## Our first achievements

- Proof of concept in multiple sclerosis imaging
- Creation of a secure data exchange portal
- Setting up training courses via clinical cases
- Creation of a network of experts for different pathologies

## Expected benefits

### Patient

- Rapid local care
- Diagnostic security through the use of expertise
- Coordinated city-hospital care pathway

### Professional

- Improvement of examinations
- Valuation of his activity
- Diversification of his activity through research

### Research

- Ability to mobilize and collect data via the network
- Sufficient active patient file to feed



Non-profit association hosted by the Lille Foundation

President: Pr. Jean Pierre PRUVO

Telephone: +33 6 82 89 01 07

Website: [www.arianes.fr](http://www.arianes.fr)